



*The Honorable*  
**LOURDES A. LEON GUERRERO**  
*Maga' Hâga • Governor*

*The Honorable*  
**JOSHUA F. TENORIO**  
*Sigundo Maga' Lâhi • Lieutenant Governor*



**VINCENT P. ARRIOLA**  
*Director*  
**LINDA J. IBANEZ**  
*Deputy Director*  
**ERNEST G. CANDOLETA, JR.**  
*Deputy Director*

09 APR 2026

The Honorable Frank Blas Jr.  
Speaker, 38<sup>th</sup> Guam Legislature  
*I Mina'trentai Ocho Na Lehislaturan Guahan*  
Guam Congress Building  
163 W. Chalan Santo Papa  
Hagatna, Guam 96932

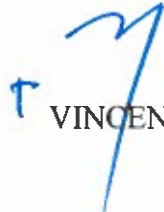
**Re: Citizen Centric Report (CCR) for Fiscal Year ended September 30, 2025**

Dear Honorable Speaker:

We are pleased to present the Department of Public Works' Citizen Centric Report for Fiscal Year ended September 30, 2025 pursuant to Public Law 30-127 Section 2(a). These four (4) pages report provides to the People of Guam information of the department's mission, goals, objectives, finances, performances, challenges and our future outlook. DPW will post the CCR in our website: [www.dpw.guam.gov](http://www.dpw.guam.gov).

Should you need additional information, or have any questions or concerns, please call me at 671-646-3131.

*Si Yu'us Ma'ase!*

  
VINCENT P. ARRIOLA



*Attachment: Citizen Centric Report FY 2025*

cc: Governor of Guam  
The Honorable Joe S. San Agustin, Senator  
Office of Public Accountability

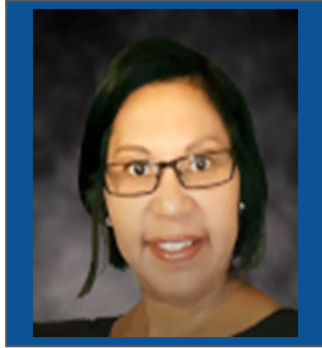
# DEPARTMENT OF PUBLIC WORKS

DIPATTAMENTON CHE' CHO PUBLEKO

CITIZEN CENTRIC REPORT - FISCAL YEAR 2025



**Vincent P. Arriola**  
Director



**Linda J. Ibanez**  
Deputy Director



**Ernest G. Candoleta, Jr.**  
Deputy Director



## ABOUT US

The Department of Public Work (DPW) was established under Public Law 1-88 in 1952 under section 5104. DPW provides five major essential service: Public Safety, Transportation, Highway Maintenance, Government-Wide Support, and Capital Improvement Projects. Within DPW there are six divisions: Administrative Service, Building Construction and Facility Maintenance, Bus Operations, Capital Improvement Projects, Highway and Transportation Maintenance. These divisions assist in providing service to ensure the department's mission to fulfilled to the people of Guam.

GENERAL INFORMATION	FY 2025	FY 2024
Population	175,263	174,114
No. of Public / Charter School Enrollment	± 27,117	± 24,322
No. of Gov Guam Employees	11,750	11,980
No. DPW of Employees	233	245
No. Village / Primary Streetlights	(150W/250W) 17,611 / 4978	(150W/250W) 17,338 / 4967
No. of Secondary Collector Streetlights	0	0
Total Miles of Roads: Primary / Secondary	230/ 862.10	230/ 862.10

## MISSION

Our Mission is to provide, to the people of Guam, a safe, smooth and high quality roadway system. An efficient, reliable, and safe school bus transportation system. A process that ensures the public's safety through the proficient review and examination of all building permits and application. The administration of constructing and maintaining all government buildings and capital projects, all within an efficient and cost effective manner.

## GOALS & OBJECTIVES

- Enforce building codes
- Provide safe and efficient highway transportation system
- Maintain and repair DPW's school buses, vehicles, and equipment
- Build and maintain a safe and efficient highway system
- Manage all Government of Guam capital improvement projects and comply with building codes, territorial, and federal safety guidelines
- Coordinate and manage Guam's comprehensive highway safety program
- Provide maintenance, repairs, and construction services for government buildings
- To provide administrative tasks, processes and support in relation to operations, conforming to policies and procedures in allocating resources



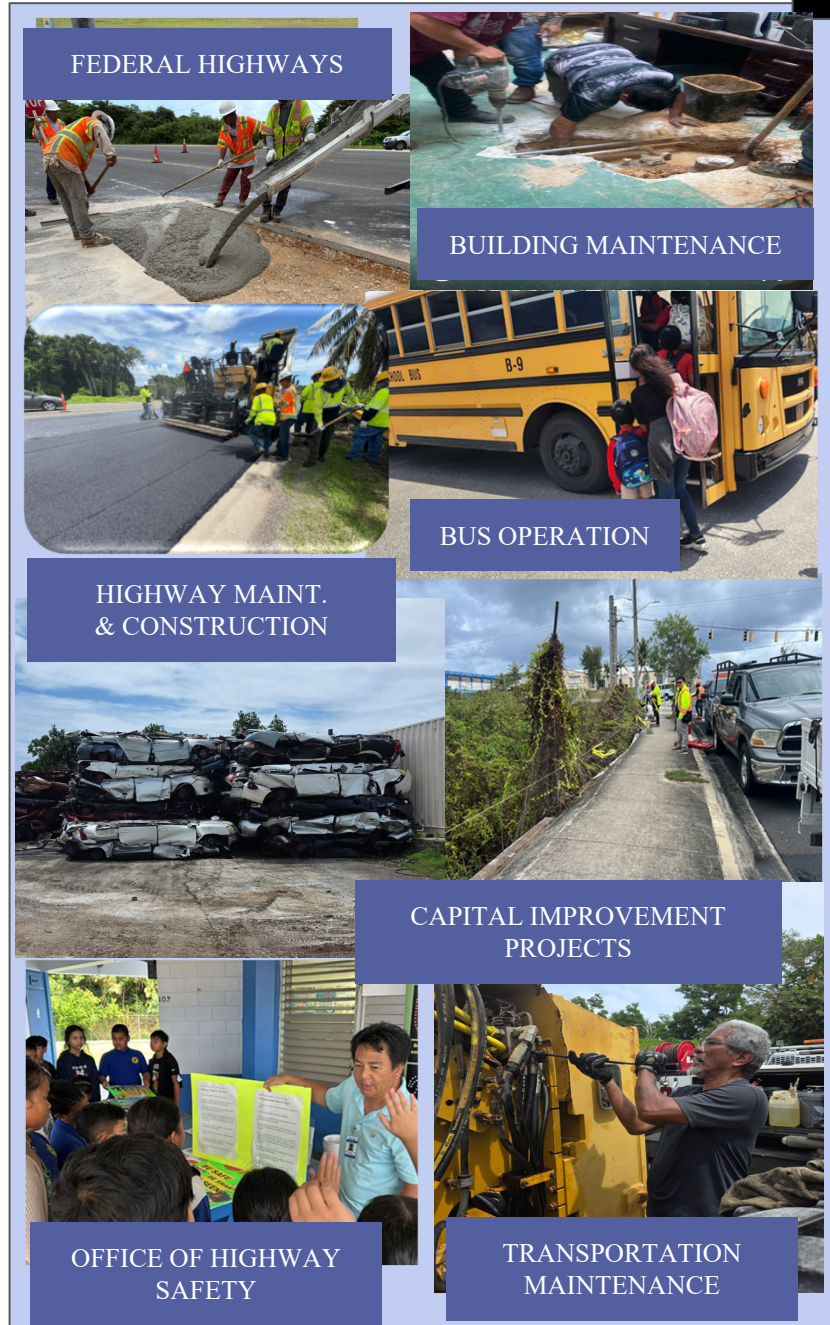
## HOW HAVE WE PROGRESSED IN FY 2025

## PUBLIC WORKS

*Pride In Public Service*

### DPW ESSENTIAL SERVICES:

	FY 2025	FY 2024
<b>CAPITAL IMPROVEMENTS</b>		
<b>Number of Highway Construction Projects:</b>		
Number of Bridges	0	0
Number of Roadways	7	5
No. of Ongoing Projects	4	2
No. of Completed Projects	3	3
No. of Ongoing Projects (CIP)	31	50
No. of Completed Projects (CIP)	24	35
Total Building Permits Issued	786	924
<b>HIGHWAY MAINTENANCE</b>		
Number of Miles Resurfaced	6.12	5.75
No. of Potholes Repaired (Avg. 1.5'x1.5'x4)	283	275
No. of abandoned vehicles picked up from roadways	186	-
<b>HIGHWAY SAFETY CORE MEASURES</b>		
Total Fatalities	21	15
Serious Injuries in Traffic Crashes	556	648
Unrestrained Passengers (Fatalities)	7	6
Alcohol Impaired Driving Fatalities	2	7
Speed Related Fatalities	7	5
Motorcyclist Fatalities	1	0
Pedestrian Fatalities	6	7
DUI and Drug-Related Arrests	196	245
<b>TRANSPORTATION</b>		
Bus: Total Student Passenger Count	11,885	11,800
Bus: Total Number Routes	108	116
Bus: Total Number Fleet (Operational)	94	154
Number of Bus Repairs (Estimated)	673	535
No. of Light Vehicle Repairs (Estimated)	112	107
No. of Heavy Equipment Repairs (Estimated)	107	145



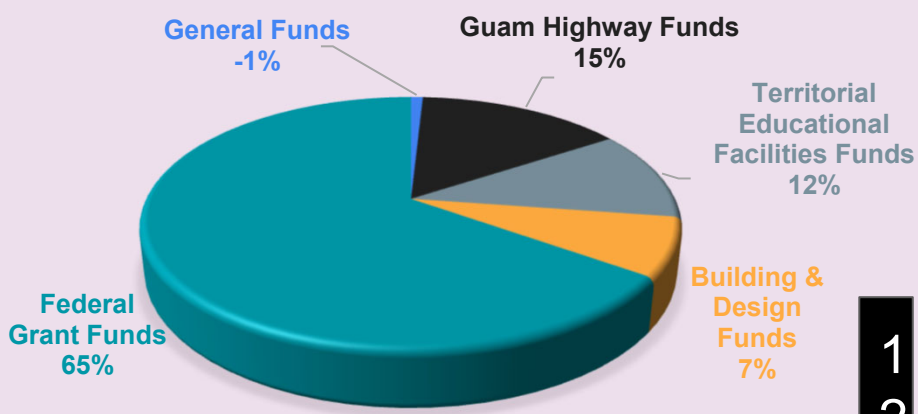
GOVERNMENT-WIDE SUPPORT	FY2025	FY2024
Total Number of Work Request	≥ 500	1,120
Avg. Day to Complete Request	2	2
Number of Plumbing Request	337	355
Number of Electrical Service Request	439	365
Number of Carpentry Request	461	400
Number of Air Condition Request	30	112

DPW - FY 2025 APPROPRIATIONS

FUND SOURCE	2025	2024
General Fund	\$(582,921)	7,719,852
Guam Highway	\$10,150,691	\$13,453,686
Territorial Edu. Facilities Fund	\$7,859,484	\$7,985,584
DPW Blg. & Design	\$5,121,815	\$8,898,219
Federal Grants	\$44,369,156	\$55,721,823
<b>TOTAL FUNDING SOURCE:</b>	<b>\$66,918,224</b>	<b>\$93,779,164</b>

Source: GFMIS

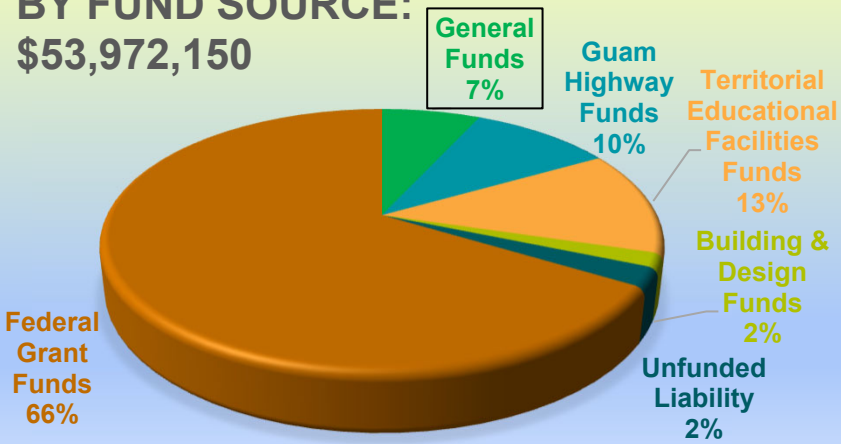
APPROPRIATIONS BY FUND SOURCE FY2025 = \$66,918,224



1  
2  
3  
4

DPW - FY 2025 EXPENDITURES

FY 2025 TOTAL EXPENDITURE BY FUND SOURCE: \$53,972,150



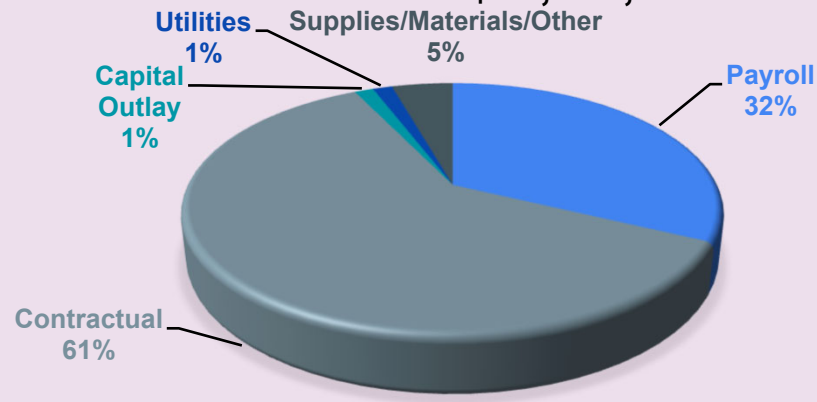
BY FUND TYPE	2025	2024
General Fund	\$3,686,792	\$2,988,614
Guam Highway Fund	\$5,353,708	\$8,295,060
Guam Edu. Facilities Fund (GEFF)	\$6,938,666	\$7,651,039
DPW Blg. & Design	\$921,402	\$1,377,273
Federal Grants	\$35,814,575	\$35,331,859
Unfunded Liability	\$1,257,008	-
<b>TOTAL FUNDING SOURCE:</b>	<b>\$ 53,972,150</b>	<b>\$ 55,643,845</b>

Source: GFMIS

BY OBJECT CLASS	2025	2024
Payroll	\$17,349,656	\$18,002,870
Contractual	\$32,758,944	\$34,027,898
Capital Outlay	\$736,958	\$1,386,081
Utilities	\$753,557	\$743,617
Supplies/Materials/Other	\$2,373,035	\$1,483,380
<b>TOTAL EXPENDITURES:</b>	<b>\$53,972,150</b>	<b>\$55,643,845</b>

Source: GFMIS

FY 2025 TOTAL EXPENDITURES \$53,972,150



DPW is included in a Government-wide audit. An independent audit was conducted, resulting in a clean audit opinion. Complete financial information can be found at: <http://www.opa.guam.org/reports-audit/financial-audits>

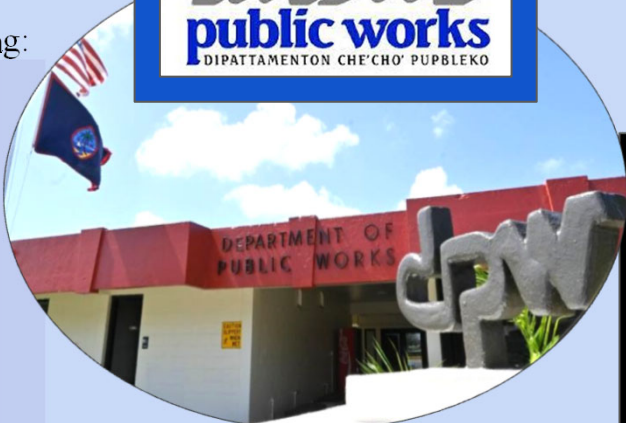
# CHALLENGES & OUTLOOK

## CHALLENGES

Due to budgetary constraints, we are challenged by the following:

- MS4 (Municipal Separate Storm Sewer System) Requirements
- MSHA (Mine Safety and Health Administration) Requirements
- Limited Materials and Supplies
- Limited Transportation Fleet
- Limited Manpower Resources
- Procurement of Electric School Bus

Source: Office of Highway Safety



1  
2  
3  
4

## PEDESTRIAN SAFETY



Always use a crosswalk if it's an option.



Follow the rules of the road and obey signs and signals.



If a crosswalk is not available, find a well-lit area with the best view of traffic.



Watch for cars entering or leaving driveways and in parking lots.



Rt.9 Flood Mitigation Swale Clearing Operation

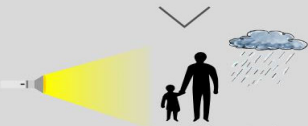
## DRIVER AWARENESS



Watch for pedestrians At. All. Times.



Yield to pedestrians crosswalks.



Especially at night and in hard-to-see conditions.



Slow down and be prepared to stop when turning.

## FUTURES OUTLOOKS

DPW seeks to accomplish:

- > Maintaining Roads
- > Building Roads
- > Building and Maintaining Bridges, Ponding Basins, and Culverts
- > Building and Maintaining Government Facilities
- > Expanding DPW Facilities
- > Maintaining Busses and Other Fleets
- > Bus Fleet Replacement Plan

We want to hear from you!  
Do you like this report? Do you believe it should include any information? Please let us know by contacting Ms. Linda J. Ibanez, Deputy Director at (671) 646-3131 or email: [linda.ibanez@dpw.guam.gov](mailto:linda.ibanez@dpw.guam.gov)



Source: Federal Highways